

# St. Francis' School Newsletter

12<sup>th</sup> March 2021



## Value of the month – Forgiveness

### Dear Parents and Carers

The children are doing brilliantly in school and it is such a joy having them back in school and seeing you all at the gates. Thank you for trying to keep distanced and wearing masks when on site.

### Homework

Until Easter, we are only giving spelling, timetables and reading while we get the children settled and begin to see where they all are in terms of the curriculum.

### Parents Evenings

We will do our Parents' Evenings after Easter, when we have managed some assessments and know what the children's targets are. Dates will follow.

### PTA

Please see the **information below** from the PTA regarding the Spring Fundraising, St Patrick's Day and the launch of the **new School Lottery**.

### PTA Spring Fundraising

A huge 'thank you' to everyone who made a model for World Book Day. There were some amazing creations and the teachers had a very tough job judging their class winners. Please see the pictures below – scroll down.

Apple - Heidi Cherry - Toby Oak – Sebastian Elm - Danny Beech - Luisa Larch - Aaliyah Rowan - Annabelle Cedar - Lacey Pine - Erica Hazel - Jakub Hornbeam - Benjamin Maple - Holly

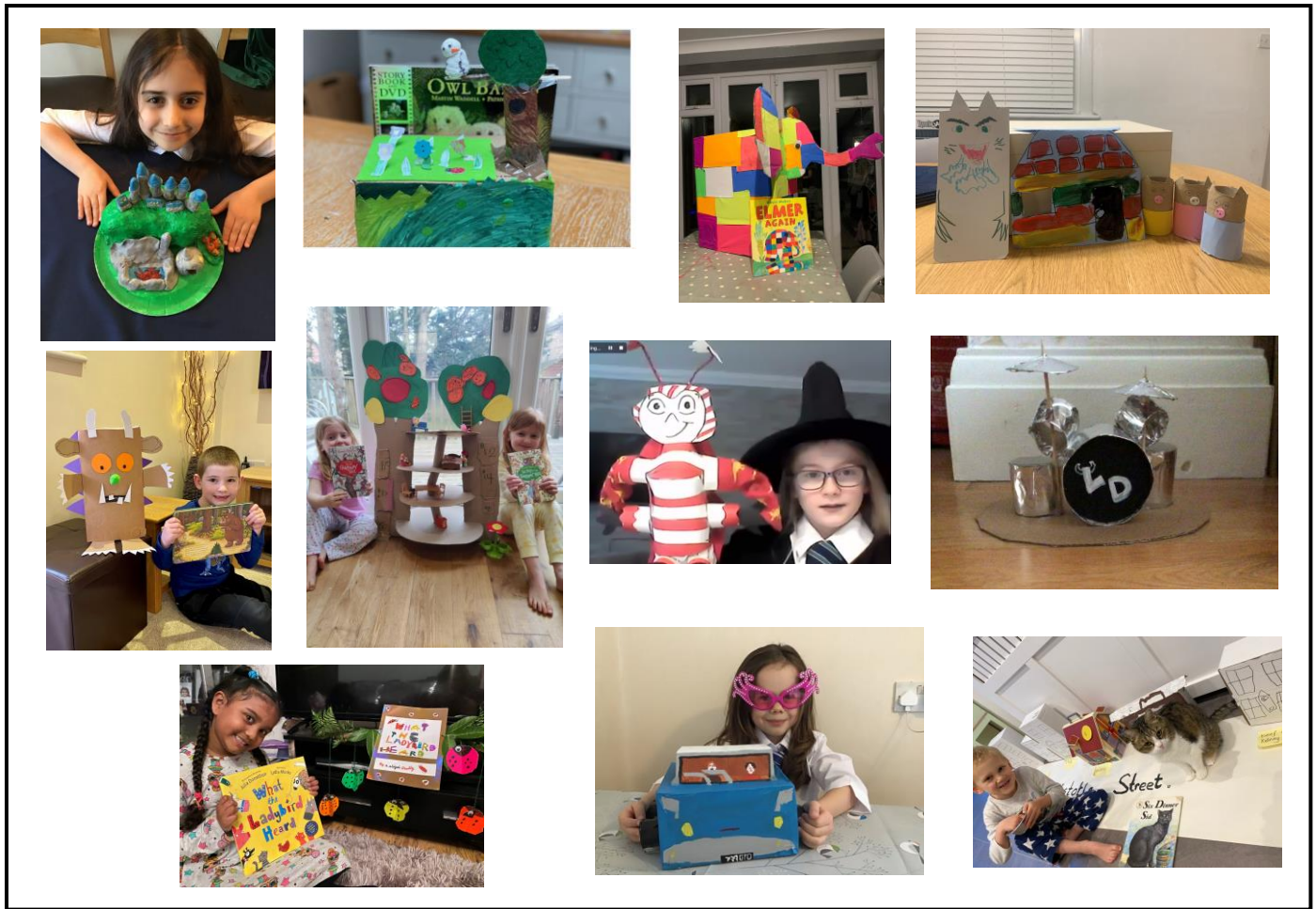
Next Wednesday is **St. Patrick's Day** and we are looking forward to seeing everyone **dressed either in green for the day, or in a special St. Patrick's Day outfit**. We will be choosing a winner from each Key Stage, so the children have a great chance to 'dress to impress'!

As the PTA is not able to fundraise through its usual ways this year, it hopes to raise funds via a suggested one-off donation of £5.00 to cover entry into this term's three events. Information on our Easter Egg / Bonnet competition, the third event, will be in next week's newsletter.

Please donate via the Ticket Tailor App. <https://buytickets.at/stfrancisschoolassociation/490087>

Best wishes,  
Mrs Wheeler and all the Staff





### CAMHS Link

For families and carers who feel that their child or young person may be anxious about returning to school, our CAMHS Early Intervention team have created a series of webinars which tackle the subject of anxiety, supporting the transition back to school and strategies to help children and young people cope. You can access these webinars here:

<https://www.youtube.com/playlist?list=PLfVgWWNqce46lxiVQNTthooXa5PBNESLXY>

## Parents' Virtual Coffee Morning



**Friday's at 9:30am**

As we are currently unable to run our usual Termly Coffee Mornings due to COVID-19 restrictions we will be running Virtual Coffee Mornings to offer Parents/Carers an opportunity to join together virtually in mutual support.

This will be an opportunity for parents to ask any questions or have any queries answered. It is also an informal chance to meet with other parents and carers, who may have similar experiences; we are keen to build a network of people that can provide support and encouragement with the rewarding, but challenging, life of a parent.

Please email [lorna.dommett@stfrancis.surreysch.uk](mailto:lorna.dommett@stfrancis.surreysch.uk) to request the link to the Zoom.

# SCHOOL LOTTERY LAUNCHED

The PTA have launched the St Francis School Association lottery in association with Your School Lottery. Buy a £1 ticket for your chance to WIN up to £25,000.

A donation from the lottery is paid directly to St Francis School so your children will benefit regardless of who wins.

To purchase tickets please visit-

To purchase tickets please click the link.

<https://www.yourschoollottery.co.uk/lottery/school/st-francis-catholic-primary-school-caterham>

Please share with friends and family, best of luck to all.

**YOUR SCHOOL LOTTERY**

**St Francis' School Association**

**WIN  
A WHEELIE AWESOME PRIZE!**

- ☐ First draw 1st May 2021
- ☐ Tickets cost just £1 a week
- ☐ Cash prize winner EVERY week
- ☐ You could even win the £25k jackpot!

**WIN A  
£500  
BIKE  
VOUCHER**

**Buy A Ticket**

## **Immediate FAQ**

### **Q: What is the School Lottery?**

A: The School Lottery is a weekly lottery brought to you by Your School Lottery, part of the Gatherwell Ltd lottery group. When you buy a ticket, you will be entered into a draw to win cash prizes. More information about how your support will help can be found on the Your School Lottery website.

### **Q: How much do tickets cost?**

A: Each ticket costs £1 a week. You can buy more than one ticket for each draw. Each ticket is also included in a jackpot draw to win up to £25,000.

### **Q: What are the odds of winning a prize?**

A: Every Saturday when the draw takes place there will be at least one St Francis School winner. The winner of each draw will receive a cash prize worth 30p from every £1 ticket sold. The odds of winning will vary and be dependent on the number of tickets sold. The odds of winning the £25,000 jackpot lottery prize are 1,000,000:1.

### **Q: When is the first draw?**

A: The first draw will be made on Saturday 1<sup>st</sup> May. All tickets purchased before the 17<sup>th</sup> April will be eligible for an additional draw to win a £500 bike voucher.

### **Q: How does St Francis School Association benefit?**

A: At least 40p from every £1 ticket will be received by the school for PTA Funds.

### **Q: What information will I need to sign up?**

A: Signing up is easy. You will need to provide your name, email address, and postal address. You will also need confirm your date of birth to validate you are over 16.

### **Q: How do winners find out that they've won?**

A: Every week, all winners will be advised by e-mail. The winning lottery number will also be published on the Your School Lottery website, Facebook and Twitter each week following the draw.

### **Q: How will I receive my winnings?**

A: Your winnings will be paid directly into your nominated bank account or you can choose to donate your winnings back to the school.

### **Q: Who deals with any further questions I may have?**

A: Your School Lottery. For any queries and dedicated support please contact them directly.



# PTA Spring Term Fundraising:



We are asking for a one-off suggested donation of £5 to cover the three events listed below:

## THURSDAY 4TH MARCH – WORLD BOOK DAY: Make a model competition

Make a model based on a favourite book. This could be made out of junk, Lego, clay etc. (anything you have handy at home). The children will be asked to show their models on Zoom and the teachers will pick **one winner per class**. Each winner will receive a prize.



## WEDNESDAY 17TH MARCH – ST. PATRICK'S DAY: St. Patrick's outfit competition

The children will be invited to wear a St. Patrick's outfit or wear something green for the day in school. We will choose **2 winners**, one from each Key Stage, and they will both receive a prize.

## EASTER EGG / BONNET COMPETITION: Entries to be sent in between Mon 22nd March & Tues 30th March

For this competition, the children will be asked to create a decorative Easter egg or bonnet and send in photos of their creations to Mrs Mills at the Rowan Class email address ([rowanclass@stfrancis.surrey.sch.uk](mailto:rowanclass@stfrancis.surrey.sch.uk)). There will be **one winner per class** and these will be announced on Thursday 1st April and receive a small prize. Please look out for further information nearer the time.



**£5 PAYMENT COLLECTED BY THE 'TICKET TAILOR' APP (DETAILS TO FOLLOW).**

# DO YOU SHOP AT AMAZON?



St Francis' School  
Association

Shop via Amazon Smile and Amazon will donate 0.5% of your eligible purchases to St Francis School Association,



**amazon**smile  
You Shop. Amazon Gives.

Visit [smile.amazon.co.uk](https://smile.amazon.co.uk)

*Select 'St Francis School Association, Caterham' as your chosen charity.*

## TURN ON AMAZON SMILE IN YOUR MOBILE APP



1. Open the Amazon Shopping App.
2. Find 'Settings' in the Main Menu.
3. Tap on 'AmazonSmile' and follow on-screen instructions.

*NB: AmazonSmile is not available in the app on iPads and Tablet Devices.  
Please shop via Amazon Smile in the web browser.*